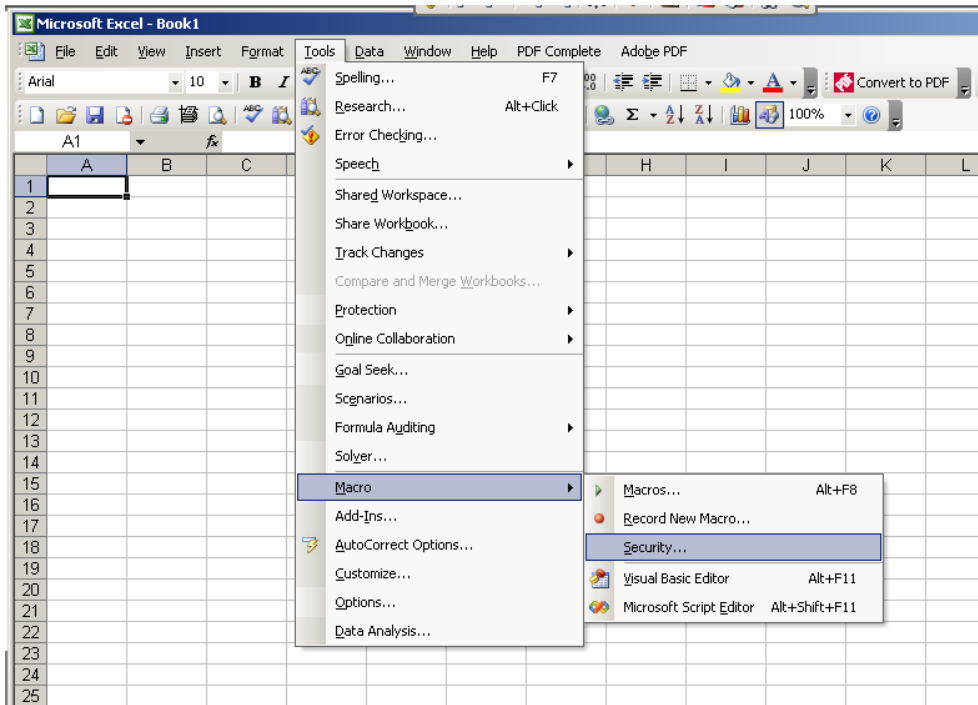


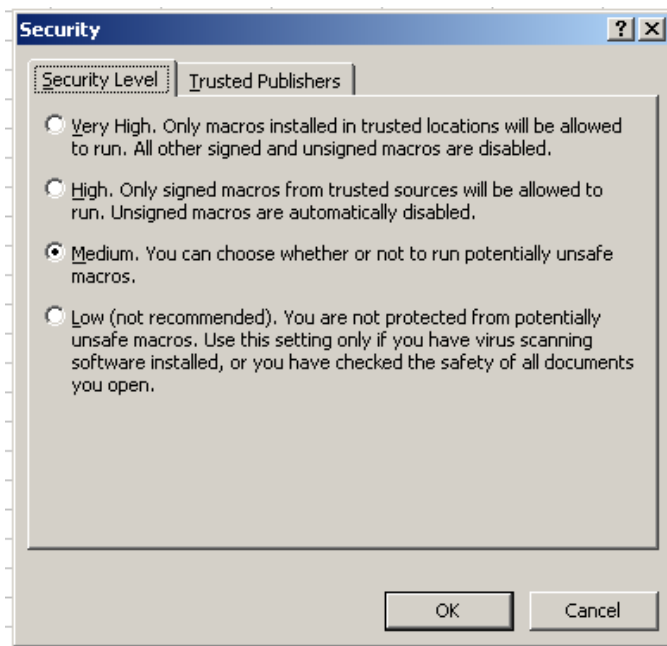
How to select the security level.

1 Select Tools / Macro / Security...

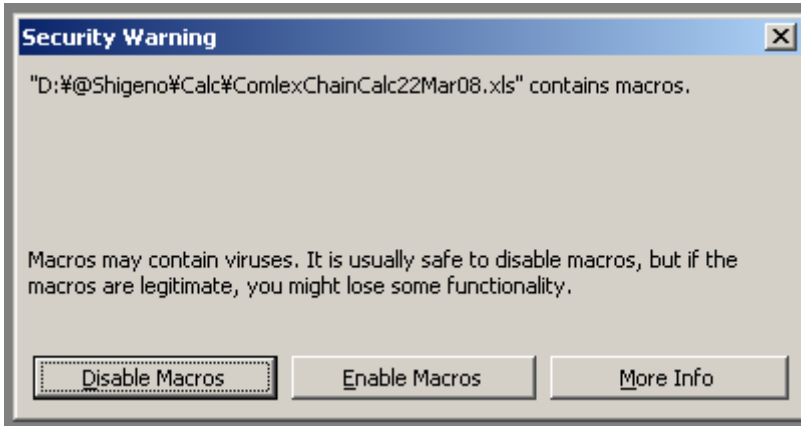


2. Select Medium.

3. Press OK button.



4. Next time, when you open an Excel file with macro. Security Warning Dialog box appears. Press “Enable Macro”.



5. If you are not sure the file you are open is safe or not, make sure your PC has a anti-virus soft ware installed and updated.